

Surego Investments 13 (Pty) Ltd Reg No 2005/004231/07 - t/a

# Bafana

*Fencing Solutions*

**Kobus**



+27(82) 825 2173



kobusbafana@lantic.net

**Elsie**



+27(82) 353 5905



elsiebafana@lantic.net



Visit us at our website –  
[bafanasolutions.co.za](http://bafanasolutions.co.za)



**BROCHURE**



Visit us at our website – [bafanasolutions.co.za](http://bafanasolutions.co.za)

## INTRODUCTION

Bafana Fencing Solutions is part of the Surego Investments Group and is a proudly 100% Black Owned South African company with a Level 1 BBBEE rating.

We offer a wide range of fencing solutions, where we supply, deliver, and install the following fencing solutions all over South Africa and neighboring countries:

- High Security Welded Mesh fencing, also known as 'Clearview' fencing.
- Diamond / Chain link fencing
- Razor Mesh Fencing
- Concertina Razor Coil / Flatwrap Razor wire
- Game Fencing
- Electrical Fencing
- Stock Fencing
- Pre-cast concrete walls
- Concrete Palisades
- Steel Palisades



## HIGH SECURITY FENCING

Our High Security Fencing is also known as 'Clearview' fencing.

We provide turnkey fencing solutions to the residential, commercial, construction, agricultural and mining industries and we provide this all-over South Africa and neighbouring countries.

Our factory has more than 50 (fifty) years' experience in the manufacturing industry and manufactures all our wire fencing panels with locally sourced input materials. All input material is authenticated with wire strength test certificates from reputable local suppliers and in-house testing of wire strength, welds, and aperture sizes during all stages of the manufacturing process. Final inspections ensure that optimal standards are achieved and maintained.

## COMPLIANCES

Our production unit has a proven track record, is committed to a safe operating environment, and manufactures to the highest local and global quality standards, such as:

- ISO 9001:2008
- ISO 14001:2004
- OHSAS 18001:2007
- SABS Certificate



## HIGH RIGIDITY

Multiple V-bends, high tensile wire of up to 745MPA, with a vertical wire arrangement adds increased rigidity to our range of wire fence panels. Offering maximum protection to perimeter fences and property assets. All wire fence panels are supported by a 10-year warranty.



## ANTI TAMPER

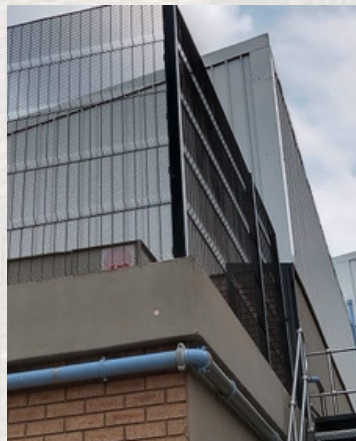
Apart from our unique product design, which makes climbing and cutting difficult, all our barrier solutions are installed with a unique anti-tamper fixator solution which further eliminates the possibility of intruders gaining access to your property.

## UNOBTRUSIVE QUALITY

Inspired through architectural design, our products were created with our customers in mind. Our wire fence panels are aesthetically pleasing with high visibility creating a sense of freedom without compromising on security requirements.

## LOCALLY MANUFACTURED

Our own machinery and technical resources enable us to manufacture all products locally and give us the added advantage of offering customers a uniquely designed product that specifically meets their security requirements.



## ABOUT OUR CLEAR VIEW FENCING PRODUCTS

**COATINGS OPTIONS** Our range of products has been designed to offer customers a fully customizable fencing solution, from welded mesh panels to a choice of spikes and posts, giving them the ability to build the perfect and specific security barrier for your lifestyle needs. In addition, we have four different coating options to choose from, which round off the overall picture and give any fencing solution the desired finishing touch.

- **ZINCALU**

ZincAlu coated wire is a combination of zinc (95%) and aluminium (5%) that is designed to triple the conventional life expectancy of traditional hot dipped galvanised wire as produced to BS443 standards. Salt spray tests demonstrate that ZincAlu corrodes at significantly lower rates when compared with zinc coatings.

- **GALVANISE**

A Cost effective and elegant solution for inland applications. All wire fencing panels are fabricated from pre-galvanized materials.

- **POLYESTER POWDER - PPC**

Exterior, UV resistant Polyester Powder Coating available as a final finish to all pre-galvanized wire fence panels and components.

- **PLASCOAT - PVC**

A Zinc Enriched Primer is applied to pre-galvanized wire fence panels and subsequently coated with an exterior Polyester Powder Coat. Recommended for Coastal applications



## ANTI-TAMPER SCREWS

Anti-tamper screws are available as self-drillers (in galvanized or stainless steel) as part of a rivet solution and used with Square Tube posts during installing. They can only be applied or removed with a uniquely designed key.

## MULTI & MAXI SPIKES

Our exceptionally designed spiking mechanisms can be secured to any of our fences offering additional security to your property.

## FIXATORS

Our uniquely designed fixating solution ensures maximum wire contact is achieved at all times, providing customers with a strong, reliable and secure barrier solution that protects their property.

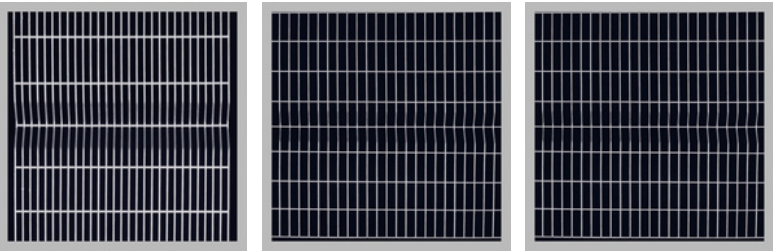


## FENCE PANEL OPTIONS

### VERTICAL APERTURES

Description	Aperture (mm)	Sheet Size		Wire Arrangement	
		Height (m)	Width (m)	Main Wire (mm)	Cross Wire (mm)
High Secure Vertical	12x76mm	1.8 / 2.1 / 2.4	3	5.6 / 4 / 3mm	4 / 3mm
Medium Secure Vertical	25x76mm	1.8 / 2.1 / 2.4	3	4 / 3mm	4 / 3mm
Econo Vertical	50x76mm	1.8 / 2.1 / 2.4	3	4 / 3mm	4 / 3mm
* Panel Heights of 3.0m High are available on request					

High Secure Vertical (12x76mm Aperture)	Medium Secure Vertical (25x76mm Aperture)	Econo Vertical (50x76mm Aperture)
--	---	-----------------------------------



### TECHNICAL SPECIFICATIONS

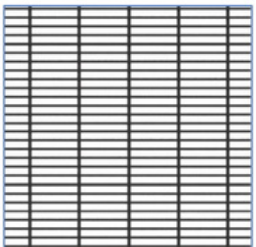
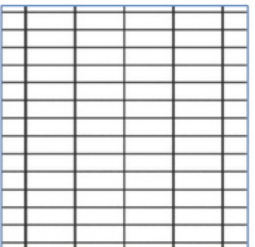
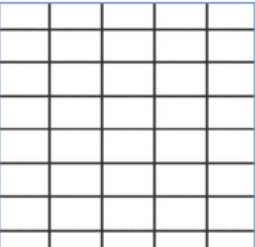
TENSILE STRENGTH	Minimum Average 626Mpa
WELDING STRENGTH	Average weld shear strength is not less than 20Nm
STANDARD WIRE TYPE	Pre-galvanized Class A Galvanised wire
ZINC MASS	Average Zinc mass 310g/m <sup>2</sup>
RIGIDITY	4 V-bends



# FENCE PANEL OPTIONS

## HORISON APERTURES

Description	Aperture (mm)	Sheet Size		Wire Arrangement	
		Height (m)	Width (m)	Main Wire (mm)	Cross Wire (mm)
High Secure Horizontal	75x12mm	1.8 / 2.1 / 2.4	3.05	5.6 / 4mm	4 / 3mm
Medium Secure Horizontal	75x25mm	1.8 / 2.1 / 2.4	3.05	4 mm	4 / 3mm
Econo Horizontal	75x50mm	1.8 / 2.1 / 2.4	3.05	4 mm	4 / 3mm
* Panel Heights of 3.0m High are available on request					

High Secure Horizontal (75x12mm Aperture)	Medium Secure Horizontal (75x25mm Aperture)	Econo Horizontal (75x50mm Aperture)
		

<b>TENSILE STRENGTH</b>	Minimum Average 450-550Mpa
<b>WELDING STRENGTH</b>	Average weld shear strength is not less than 20Nm
<b>STANDARD WIRE TYPE</b>	ZincAlu coated
<b>ZINCALU MASS</b>	Average ZincAlu coating of 205-220g/m <sup>2</sup> consisting of 95% Zinc and 5% Aluminium
<b>RIGIDITY</b>	4 V-bends
<b>TENSILE STRENGTH</b>	Minimum Average 626Mpa



## ADDITIONAL SECURITY

The following can be added to the basic Clearview Fence:

- Multi Spikes / Shark tooth spikes can be added on top of the fence.
- Posts can be extended to make provision for Electrical Fencing on top of the fence.
- Electrical Fencing can be added to the fence where it piggybacks on the main fence.
- A concertina razor coil, or razor flatwrap can be added to the fence.
- An underdig / anti-tunnelling is available with the fence.



CONTACT US FOR MORE INFORMATION



**Kobus**

+27(82) 825 2173

kobusbafana@lantic.net

**Elsie**

+27(82) 353 5905

elsiebafana@lantic.net

[bafanasolutions.co.za](http://bafanasolutions.co.za)

VISIT OUR  
WEBSITE

